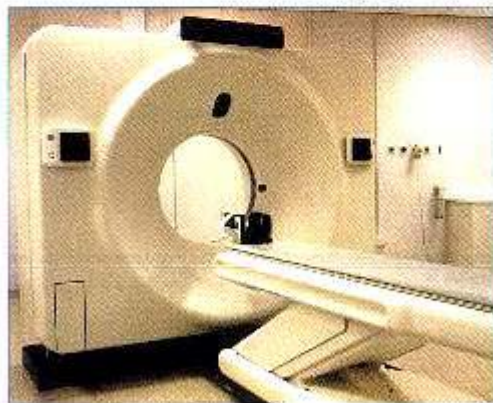




THE LEEDS TEACHING HOSPITALS NHS TRUST
THE GENERAL INFIRMARY AT LEEDS

JUBILEE BUILDING

A Patient's Guide To CT Scanning



SCHERING

A Patient's Guide to CT Scanning

What is a CT scan?

A CT (Computerised Tomography) scan is a type of x-ray examination. A computer is used to record the information that comes from the x-rays after they have passed through the body.

It then constructs a series of cross sectional pictures of the area scanned.

Preparation

The preparation for the scan varies, depending on what part of your body is being examined. Anything we need you to do **before** you come to the department is outlined on your appointment letter.

For a head scan there will be little preparation except the removal of jewellery, hairpins or hairpieces. For a scan of other parts of the body you may be asked to change into an x-ray gown.

If the scan involves the abdomen your appointment letter may include specific instructions for preparation to be made before you leave home. Once in the department you may be asked to drink some fluid – this will help us to show up your stomach and bowel on the scan.

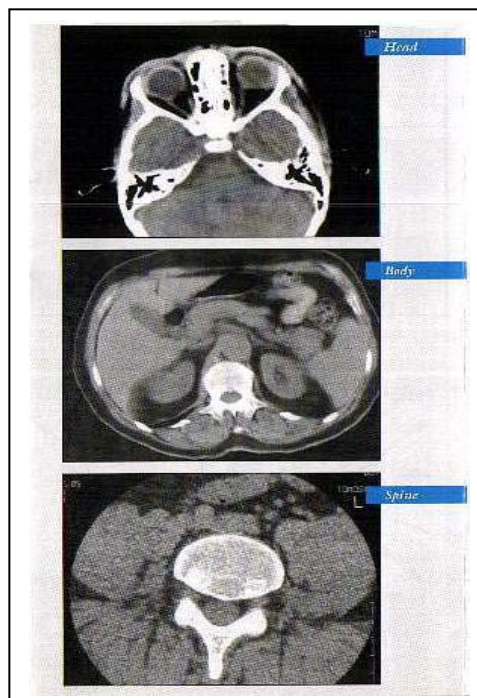
CT images

Will I need an injection?

Depending upon the type of and reason for your scan, one of our staff may have to give you an injection of dye. This should not cause your undue discomfort – this may make you feel warm all over but this is normal and will pass very quickly.

The staff

The person carrying out the scan is a radiographer. She/he will explain the procedure and answer any questions that you may have. Your scan will be reviewed and reported by a radiologist but usually not until after you have left the department.



Please don't ask the radiographer the result of your scan – that is not a radiographer's job and she/he is not allowed to comment. The results will be sent to whichever Doctor has referred you to us in due course.

